



WESTWOODLEBER

WESTWOODLEBER
LET US GUIDE YOU HOME

Woodland Road, Hertford Heath, Hertford, SG13 7QG

Offers in excess of £425,000



Woodland Road, Hertford Heath, Hertford, SG13 7QG

Westwood Leber are delighted to bring to the market this beautifully presented three-bedroom end-of-terrace home, ideally situated within a sought-after turning in the popular village of Hertford Heath. Offering approximately 814 sq ft of well-planned accommodation arranged over two floors, this attractive property is perfectly suited to modern family living.

The ground floor comprises a welcoming entrance hall, a bright and spacious lounge featuring a charming log burner, a contemporary kitchen/diner with ample space for dining and entertaining, and a convenient ground floor cloakroom.

Upstairs, there are three well-proportioned bedrooms and a modern family bathroom, with the principal bedroom benefiting from fitted wardrobes and a stylish en-suite shower room.

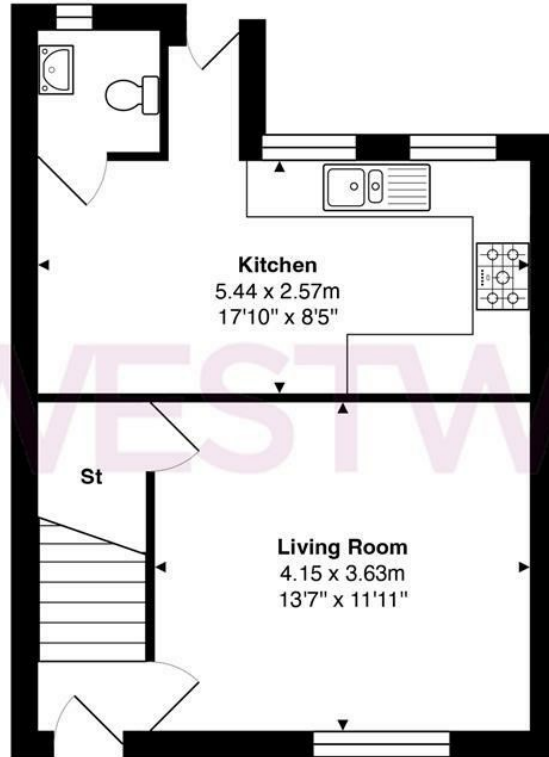
Externally, the property offers off-street parking for two vehicles to the front and a mature, well-maintained rear garden, providing a private and peaceful outdoor space ideal for relaxing or entertaining.

Ideally located close to local amenities, well-regarded schools and excellent transport links, this fantastic home is an ideal choice for families, first-time buyers and downsizers alike.

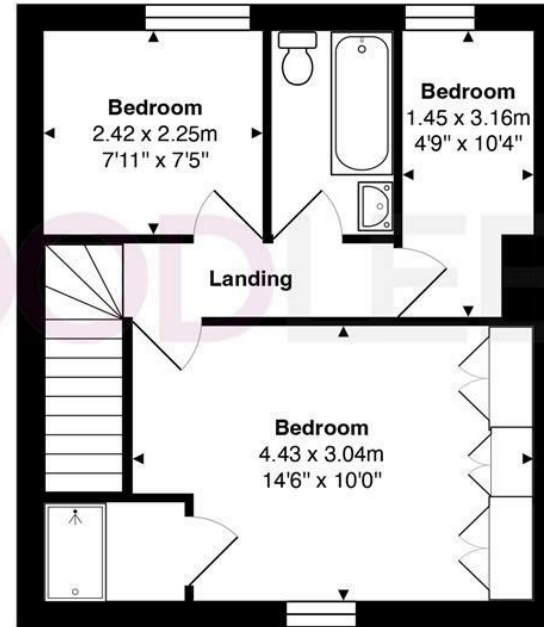


W WESTWOODLEBER

W WESTWOODLEBER
LET US GUIDE YOU HOME



Ground Floor



First Floor

Total Area: approx. 71.4 m² ... 768 ft²

THE FLOORPLAN IS FOR ILLUSTRATIVE PURPOSES ONLY AND IS NOT TO SCALE.
 Measurements and features are approximate and may differ from the actual property. Verify all details independently; no liability is accepted for errors or omissions.

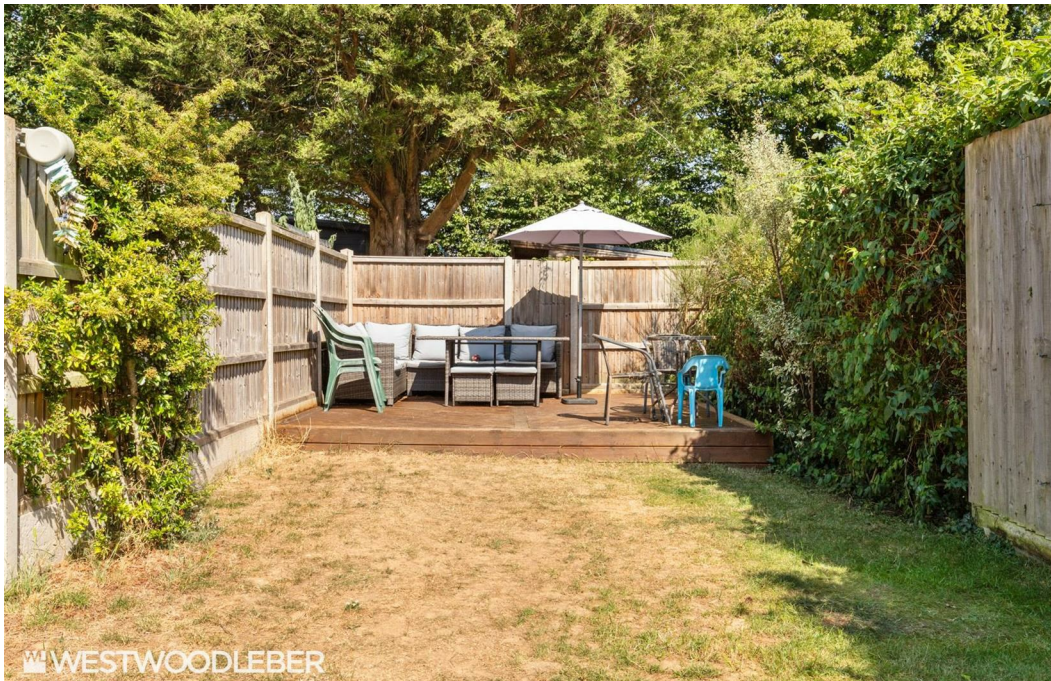
Property marketing provided by www.fotomarketing.co.uk













 WESTWOODLEBER